

1

- Mount TV to Wall
- Remove Picture Frame from Wall Enclosure

2

- Center TV inside the Wall Enclosure
- Mark top of wall enclosure with pencil line on wall
- Draw 2nd line 2.5" below this line

3

- Attach Z-Extrusion bottom level with second line (be sure it is level)
- Slide wall enclosure onto Z-extrusion and center it

4

- Re-attach Picture Frame to wall enclosure
- Plug in power cable to battery pack

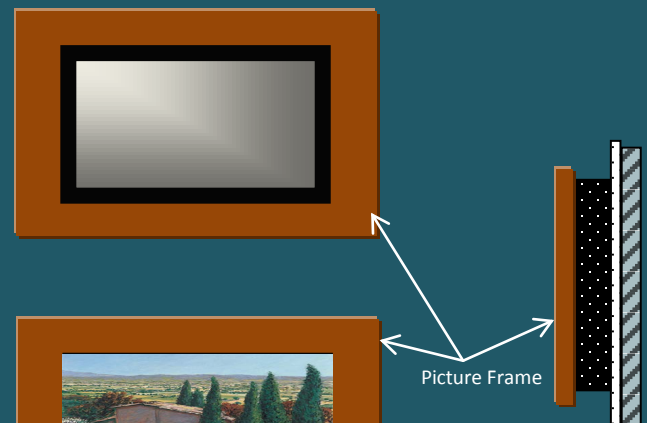
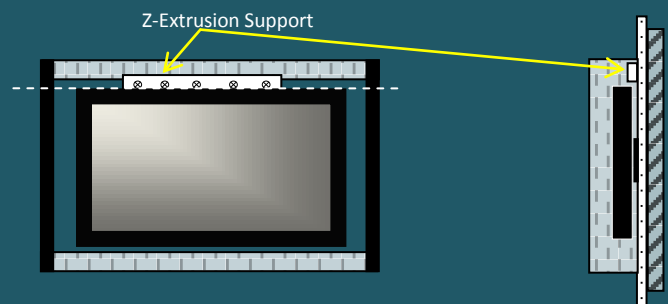
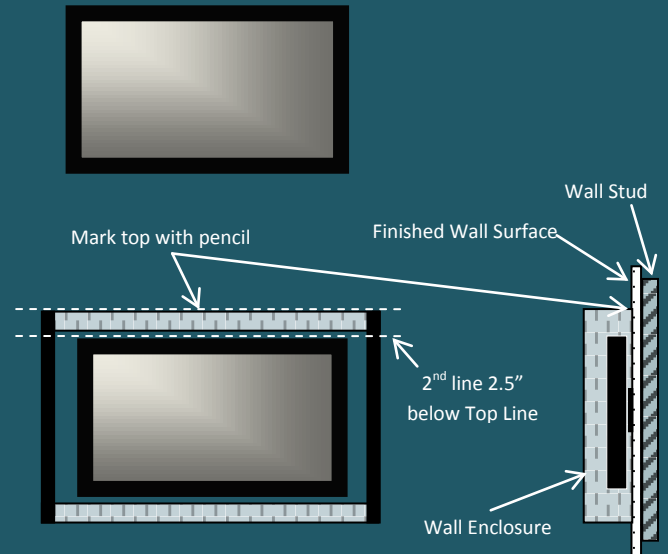
5

- Press Down Button on Remote to operate
- The sides of the enclosure may be painted to match the wall

Please consult the detailed installation manual and drawings at [www.mediadecor.com](http://www.mediadecor.com)

THIS IS ONLY A QUICK REFERENCE GUIDE

Contact Media Décor for Technical Assistance  
+1 954 524 1104





*Elegant Solutions for Concealing Flat Screen Displays*

## **Ecco Mechanical Installation**

Ecco-42: Maximum TV overall size is 43" wide x 26" high

Ecco-50: Maximum TV overall size is 53" wide x 34" high

### **1. Mount TV on wall (if mounted, skip to #2)**

- a. The TV mount must be securely fastened to wall studs
- b. Whether using the optional Media Décor Q-Mount or another mount, follow the mounting instructions carefully so that the TV is adequately supported
- c. Be sure the TV is level

### **2. Remove the Frame from the Wall Enclosure**

### **3. Center the Wall Enclosure around the TV**

- a. Lift the wall enclosure and place it over the TV and against the wall
- b. Center the TV inside wall enclosure.
- c. Using a pencil, draw a line on the top back aluminum angle
- d. Be sure the TV and wall enclosure are level when drawing this line.

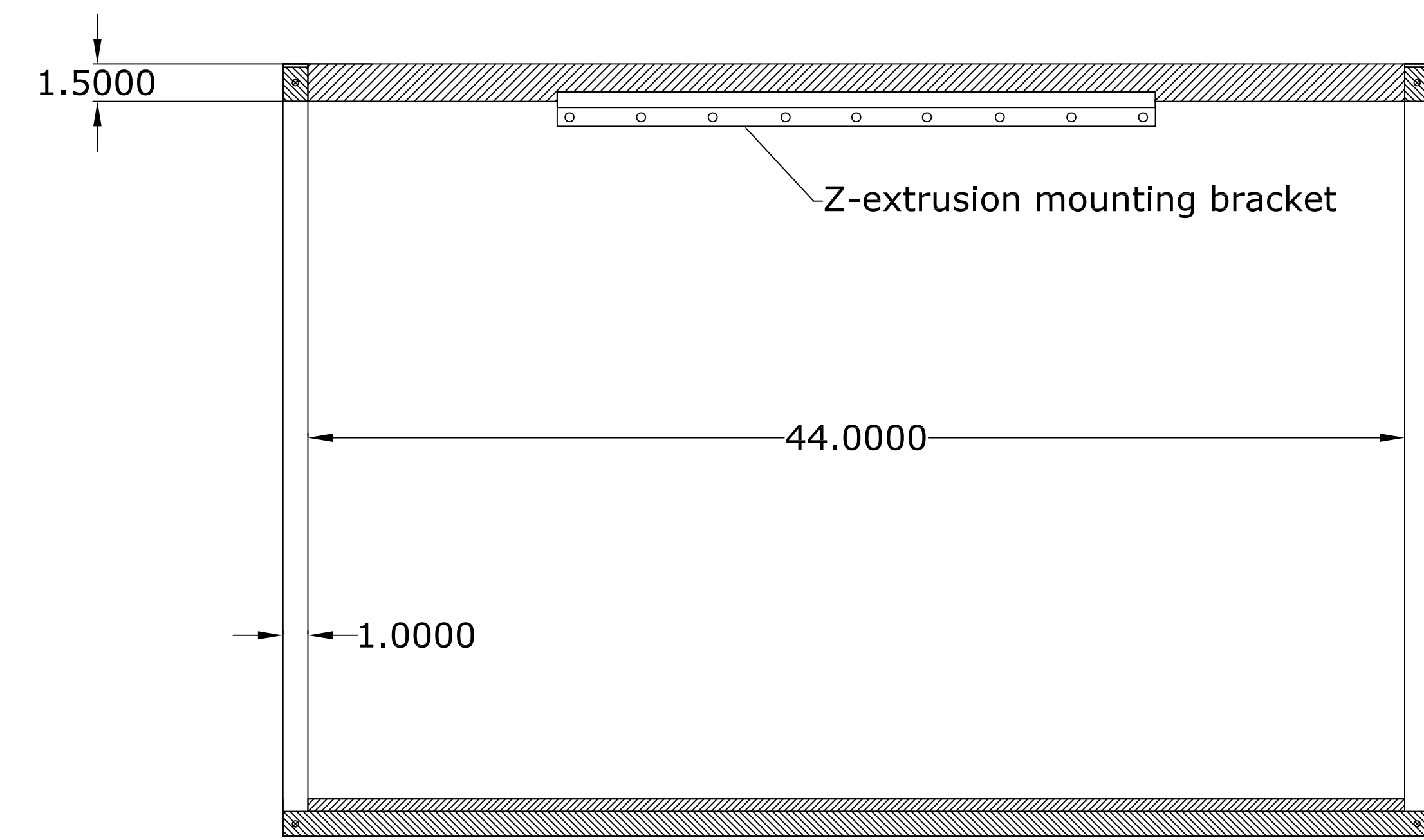
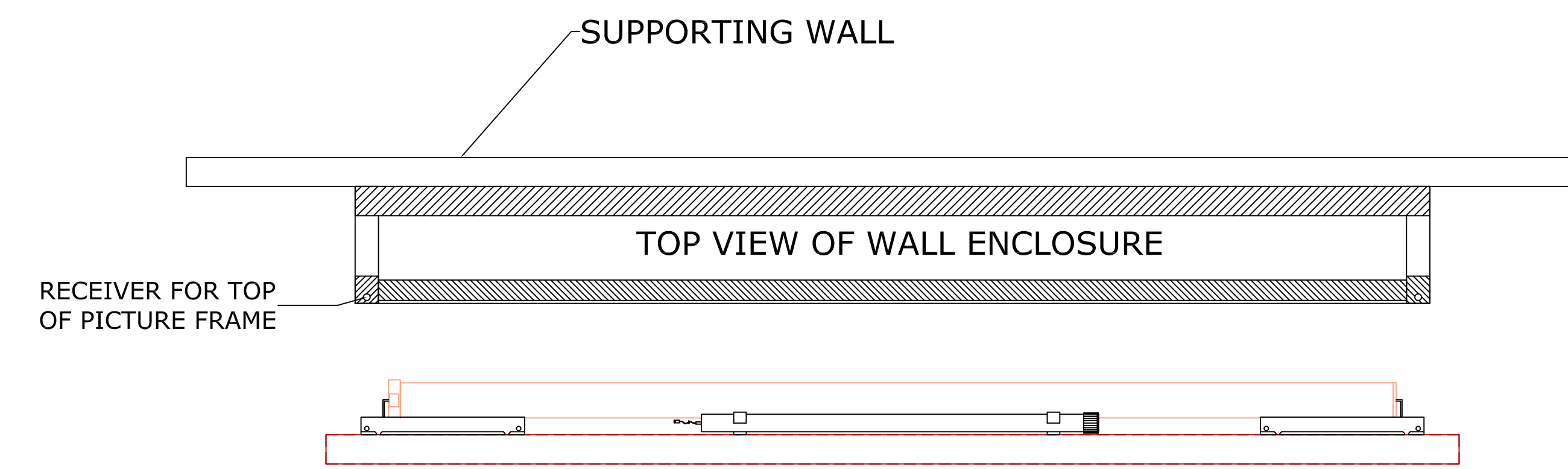
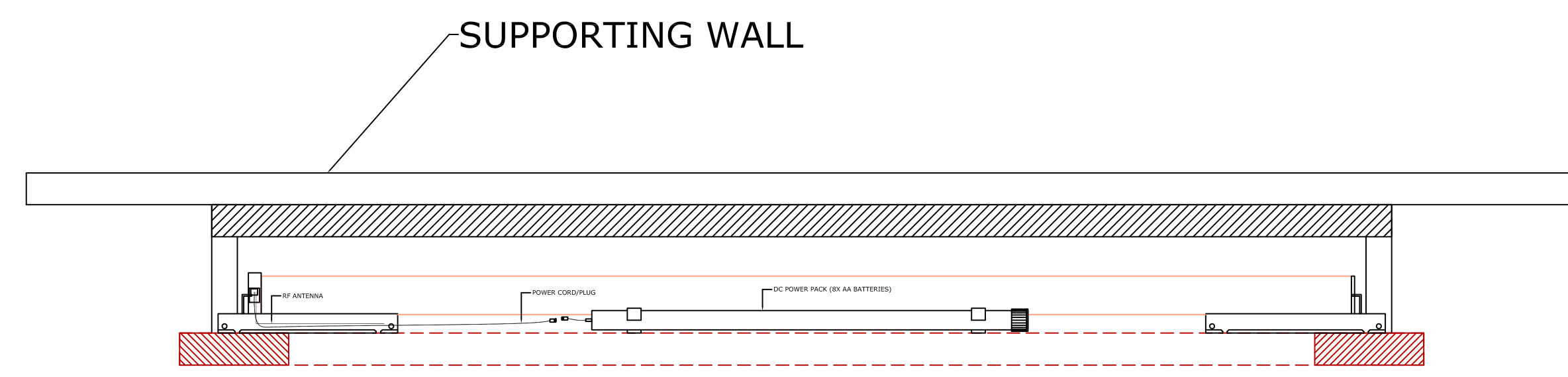
### **4. Install Z-Extrusion wall mount**

- a. Check again that the reference line is level
- b. Draw another line 2.5" below the top line (this is bottom of Z-Extrusion)
- c. Fasten the Z-Extrusion into wall securely
- d. Slide the wall enclosure into the Z-Extrusion and center the wall enclosure
- e. Attach the Ecco picture frame to the enclosure
- f. Check that the art work is inside the 2 clear plastic side channels

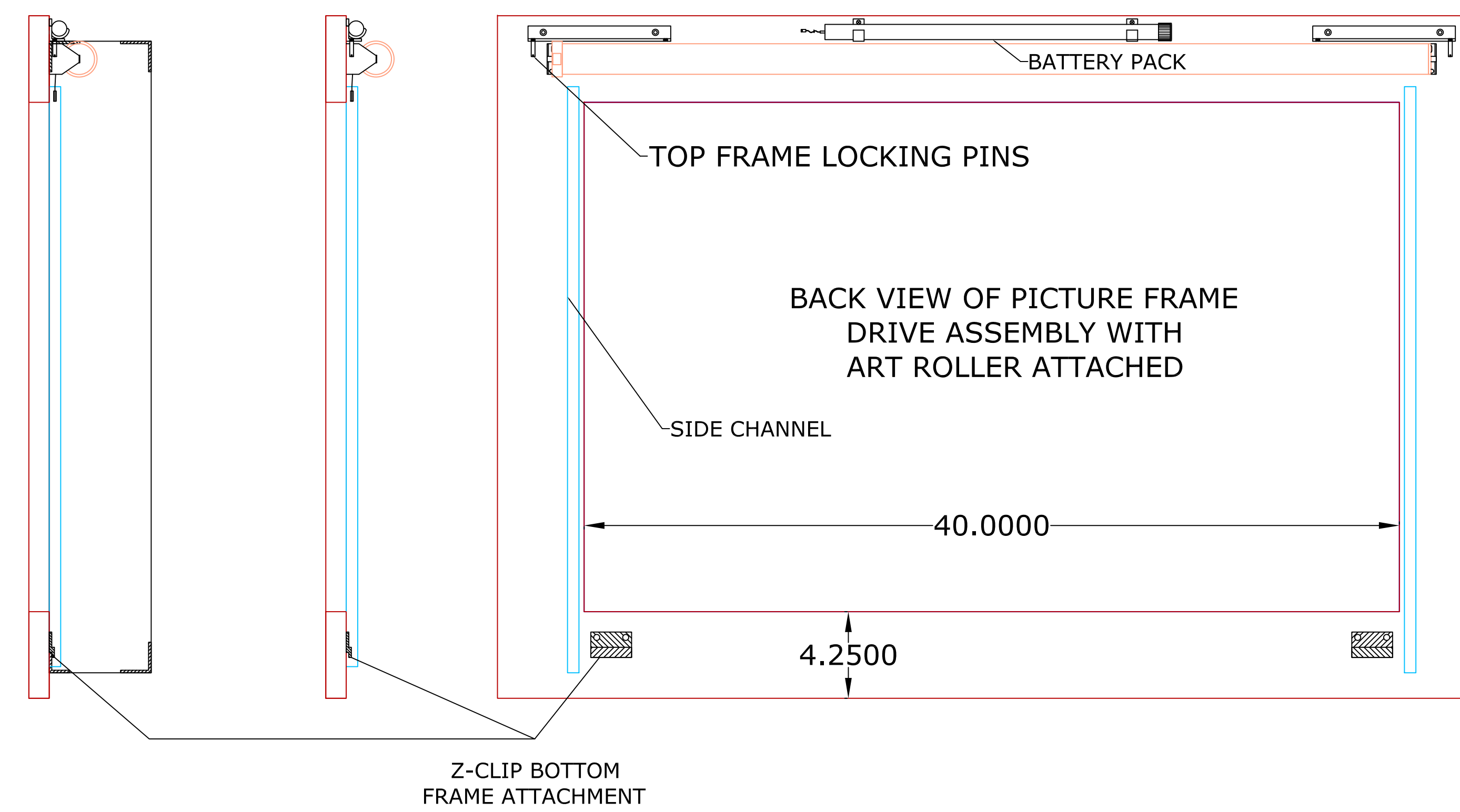
### **5. Plug in the power connector to the battery tube. That is it!**

*The sides of the Ecco Unit may be painted to match the surrounding wall. Also, any type of material or wall paper may be applied if desired. Decorative wall elements such as sconces or vertical bookshelves will effectively conceal the sides of the Ecco Unit if that is desired.*

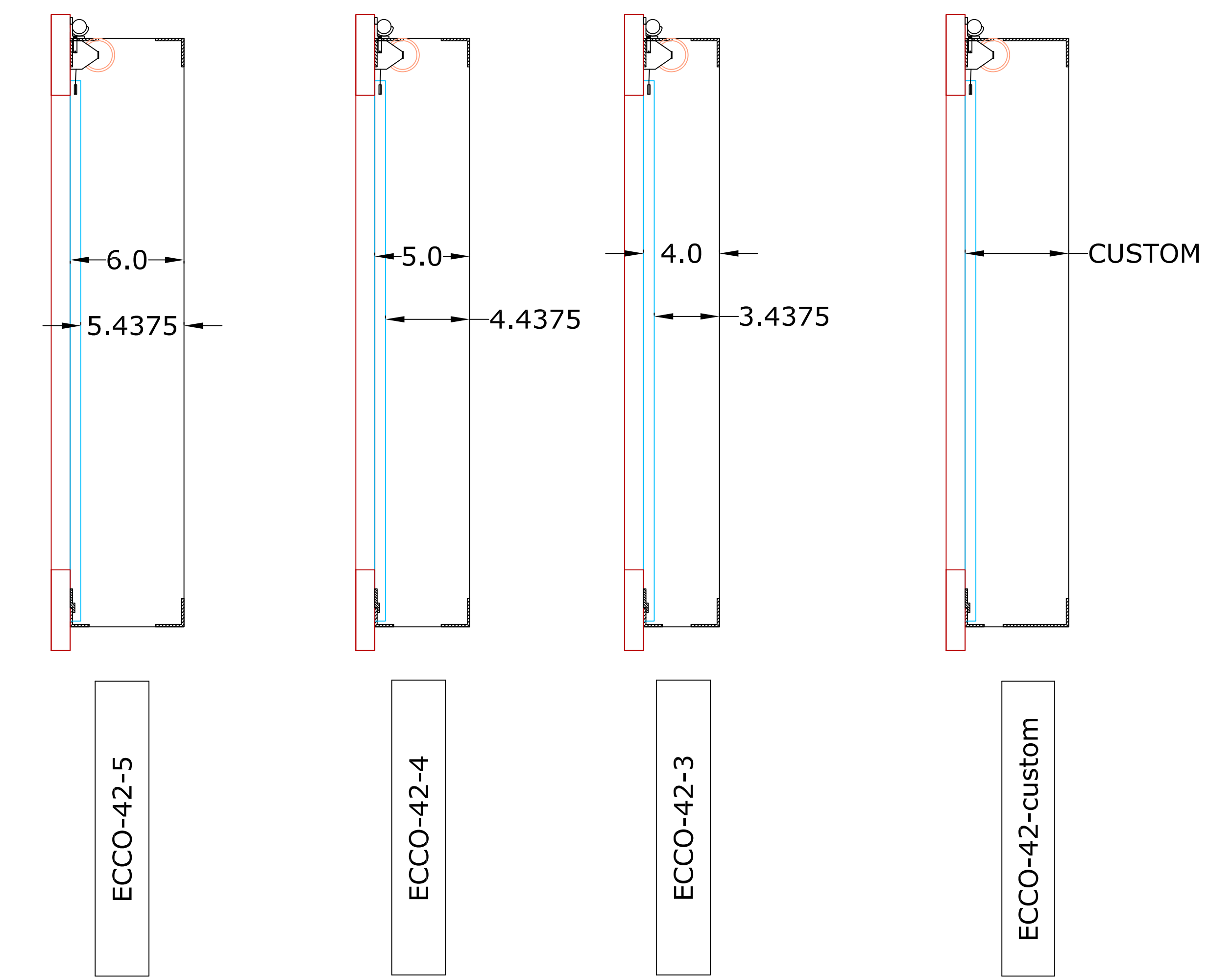
*Often, it is visually better if the back wall (inside the unit) supporting the TV is painted black*



FRONT VIEW OF WALL ENCLOSURE



Z-CLIP BOTTOM FRAME ATTACHMENT

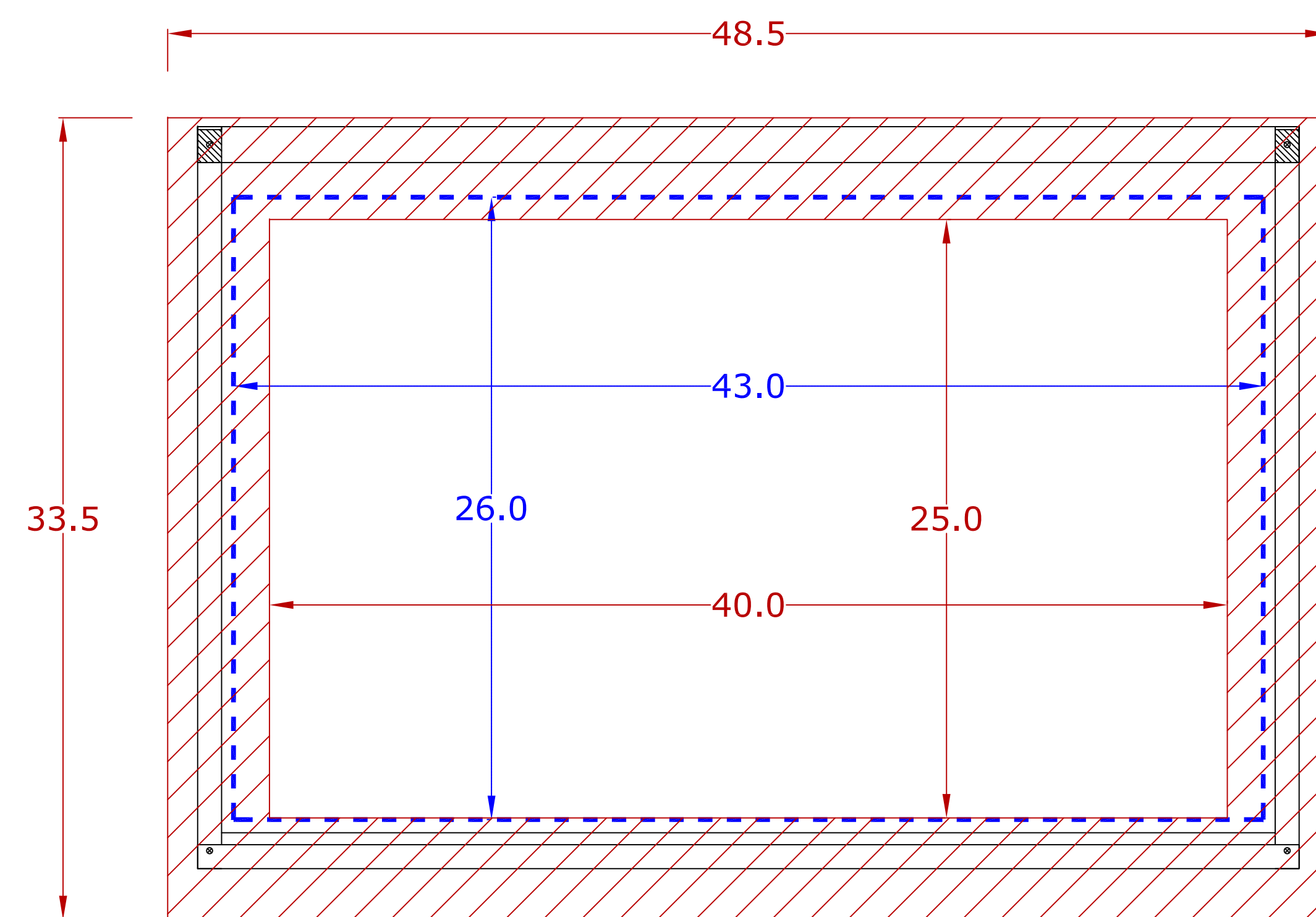


ECCO-42-5

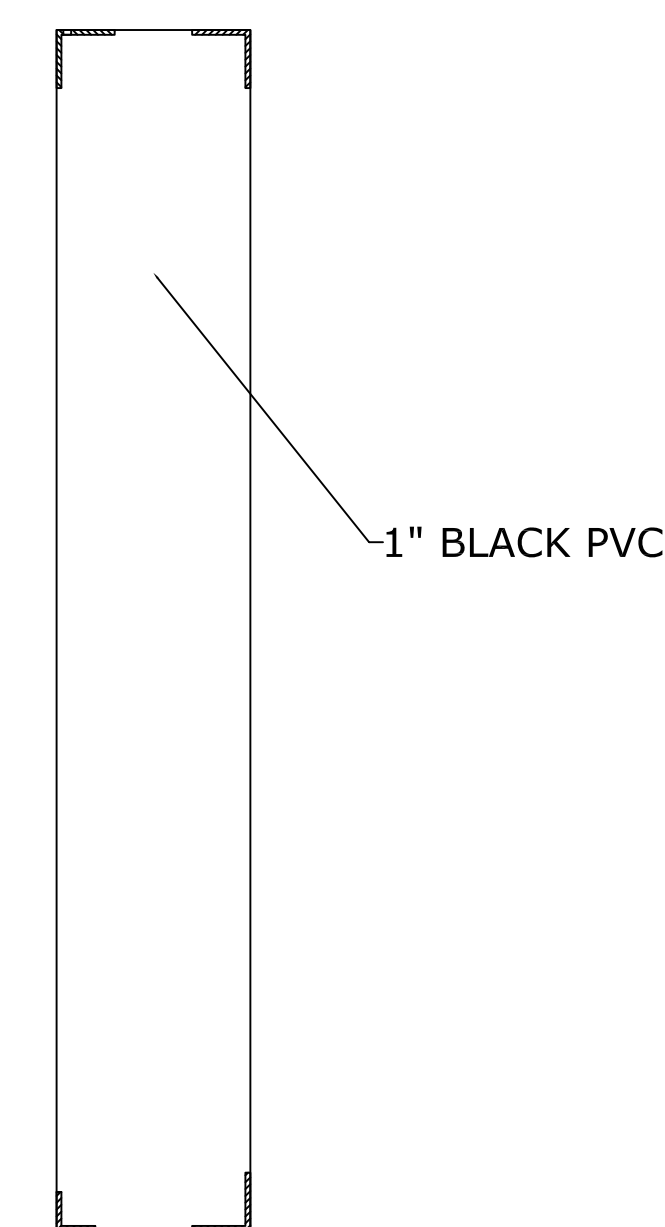
ECCO-42-4

ECCO-42-3

ECCO-42-custom



FRONT VIEW OF WALL ENCLOSURE WITH ECCO FRAME ATTACHED

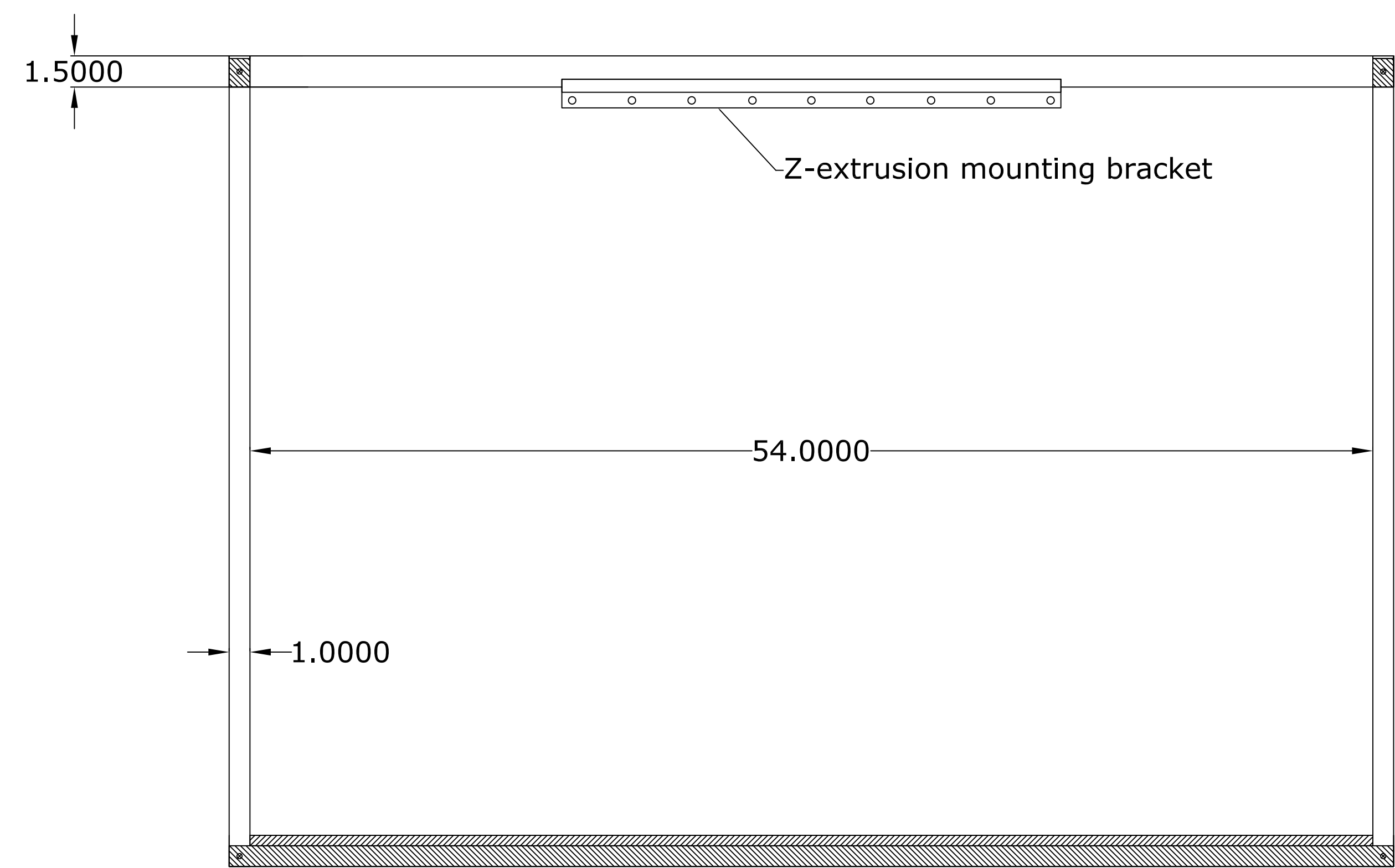
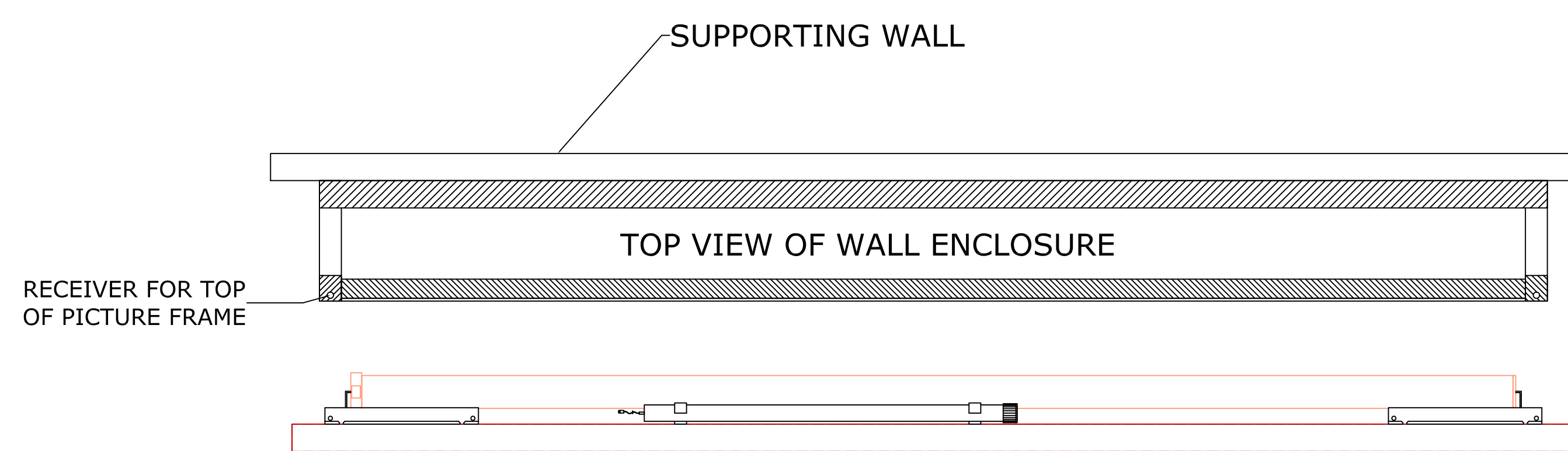
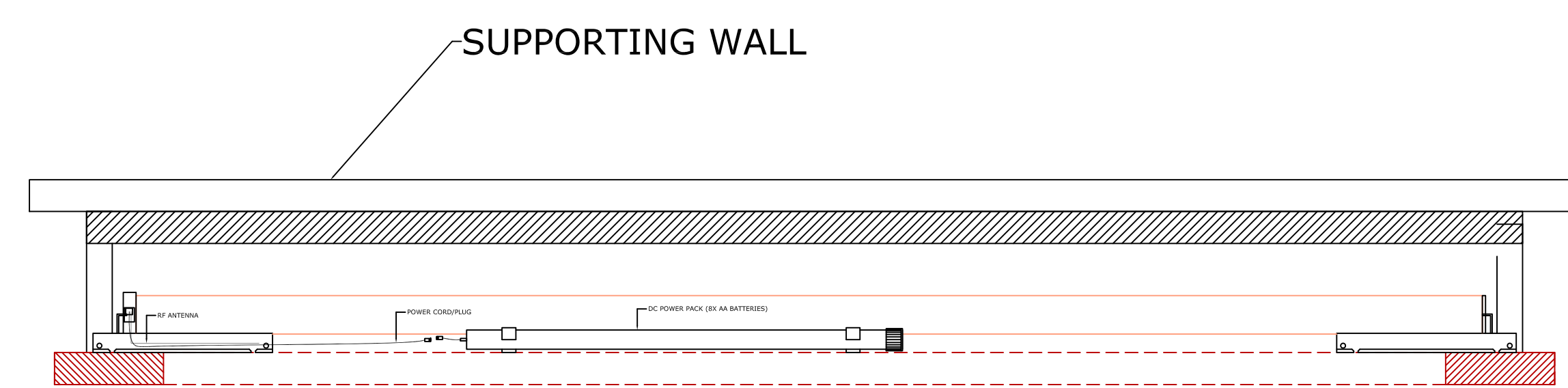


SIDE VIEW OF WALL ENCLOSURE

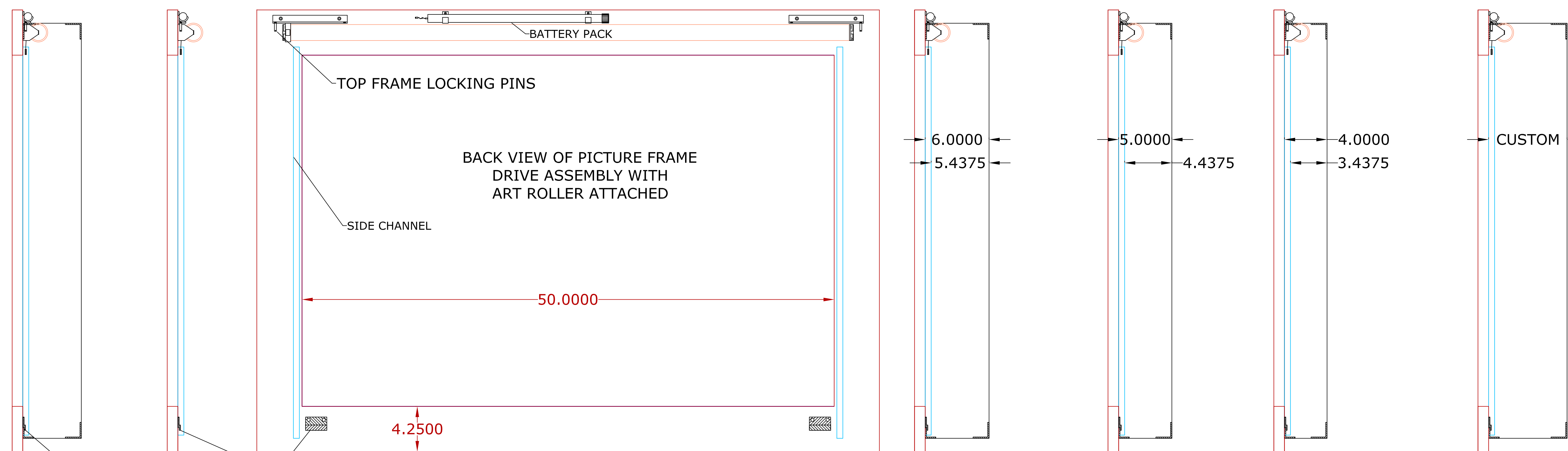
Ecco 42 Specifications						
MODEL	MAX TV/MOUNT THICKNESS	MAX TV WIDTH	MAX TV HEIGHT	FRAME INSIDE	FRAME OUTSIDE	DEPTH
ECCO-42-3	3.4375"	43"	26"	40" x 25"	48.5" x 33.5"	4"
ECCO-42-4	4.4375"	43"	26"	40" x 25"	48.5" x 33.5"	5"
ECCO-42-5	5.4375"	43"	26"	40" x 25"	48.5" x 33.5"	6"
ECCO-42-custom	custom	43"	26"	40" x 25"	48.5" x 33.5"	custom

MEDIA DECOR, LLC 954-524 1104

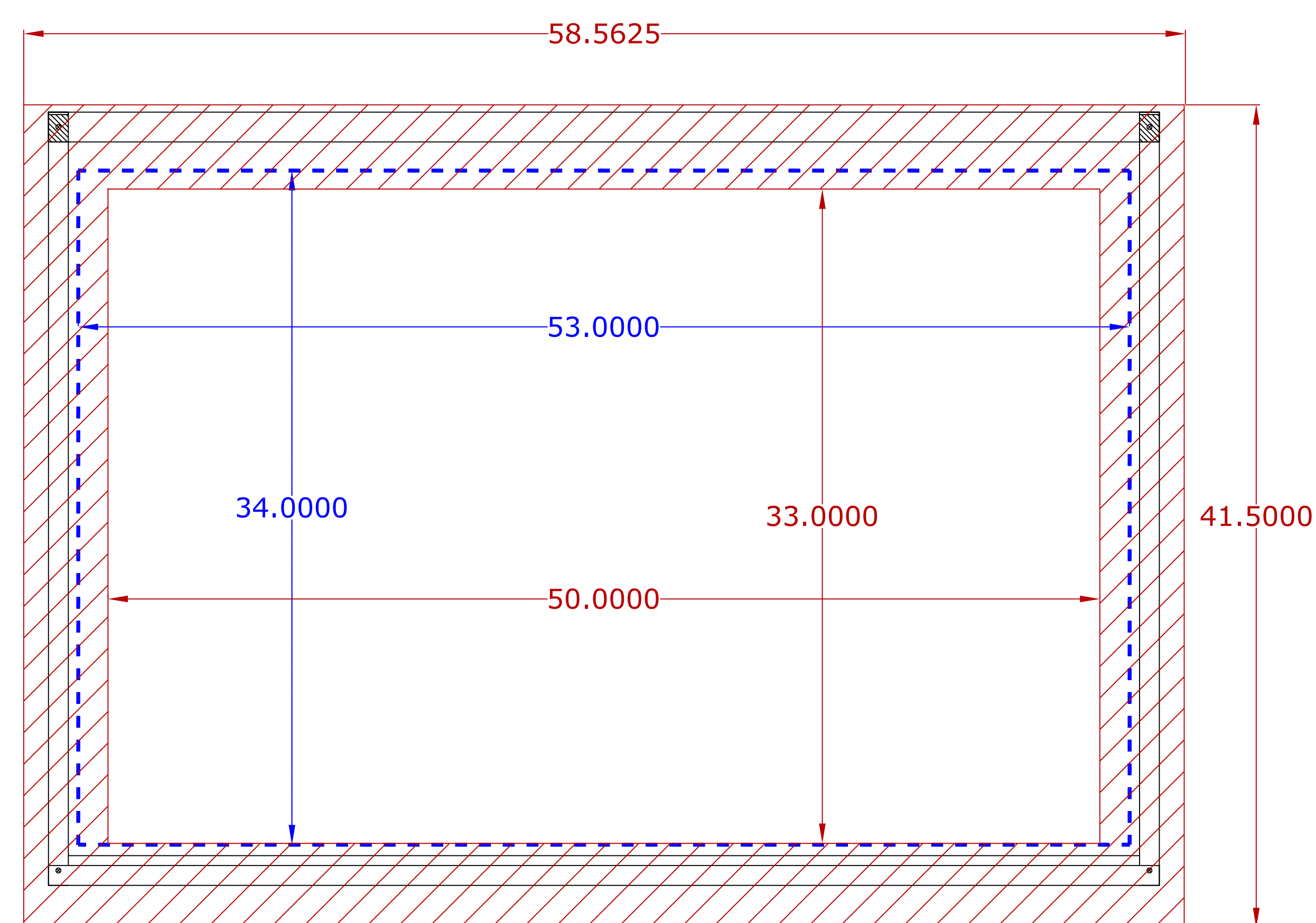
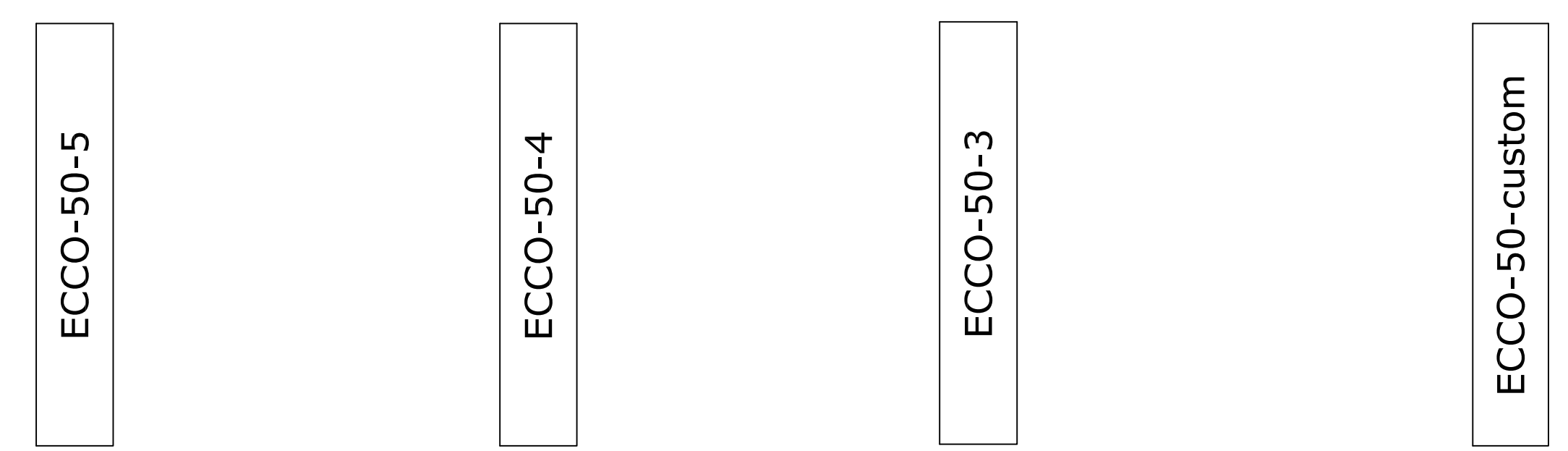
DWG NO.	ECCO-42 REV-3	REV
	SHEET	



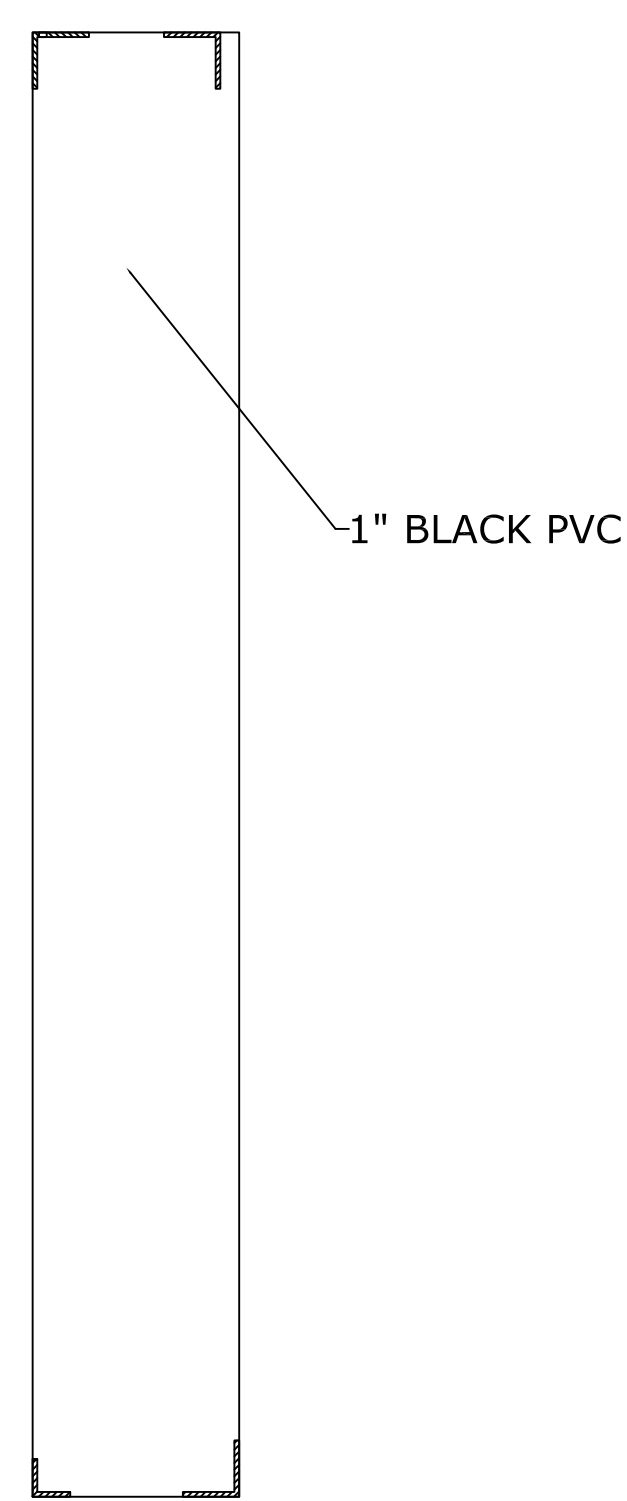
BACK VIEW OF WALL ENCLOSURE



Z-CLIP BOTTOM FRAME ATTACHMENT



FRONT VIEW OF WALL ENCLOSURE WITH ECCO FRAME ATTACHED



SIDE VIEW OF WALL ENCLOSURE

Ecco 50 Specifications						
MODEL	MAX TV/MOUNT THICKNESS	MAX TV WIDTH	MAX TV HEIGHT	FRAME INSIDE	FRAME OUTSIDE	DEPTH
ECCO-50-3	3.4375"	53"	34"	50" x 33"	58.5" x 41.5"	4"
ECCO-50-4	4.4375"	53"	34"	50" x 33"	58.5" x 41.5"	5"
ECCO-50-5	5.4375"	53"	34"	50" x 33"	58.5" x 41.5"	6"
ECCO-50-custom	custom	53"	34"	50" x 33"	58.5" x 41.5"	custom

**MEDIA DECOR, LLC 954-524 1104**

	DWG NO.	REV
	ECCO-50 REV-3	
	SHEET	